



For Sublease » Office Space
2580 Innes Road
Ottawa, Ontario



Building Details

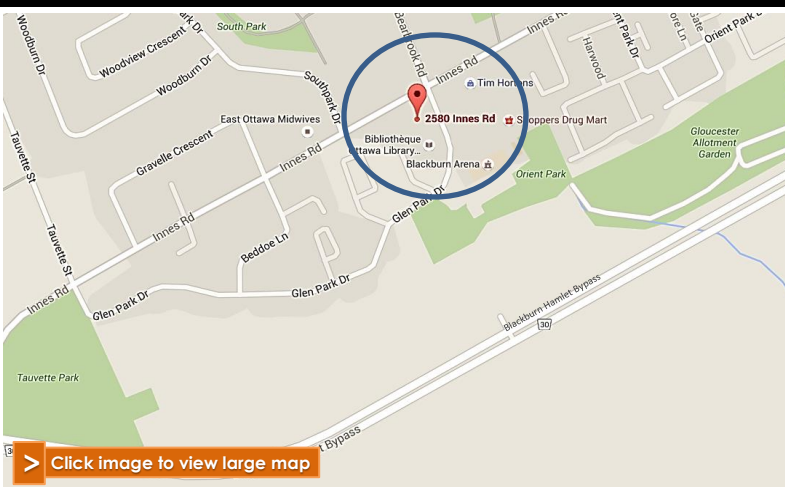
Building Size:	28,436 sf
Number of Floors:	2
Year Built:	1985
Net Rent:	\$8.75
Operating Costs:	\$12.62
Available Areas:	495 + 1,034 sf

Heat + Hydro extra

BUILDING KEY FEATURES + HIGHLIGHTS

- + Long term anchor tenants such as TD bank and Library
- + Variety of office and retail uses
- + Separate electrical systems, bathroom, and H.V.A.C. units in each retail bay
- + Large windows
- + Building has fiber optics
- + Excellent street exposure and signage
- + Abundance of parking
- + Access by Innes Road at the corner of Bearbrook
- + In the Ottawa east area of Blackburn Hamlet
- + Public transit in front of building
- + Surrounded by schools, homes, and recreational centers

» Map



> Click image to view large map

For More Information Contact

451 Daly Ave., 2nd Floor
Ottawa, Ontario K1N 6H6
www.elkproperty.com

Karen Braye Tel: 613-244-1012 ext: 200
Cell: 613-229-8723
kbraye@elkproperty.com



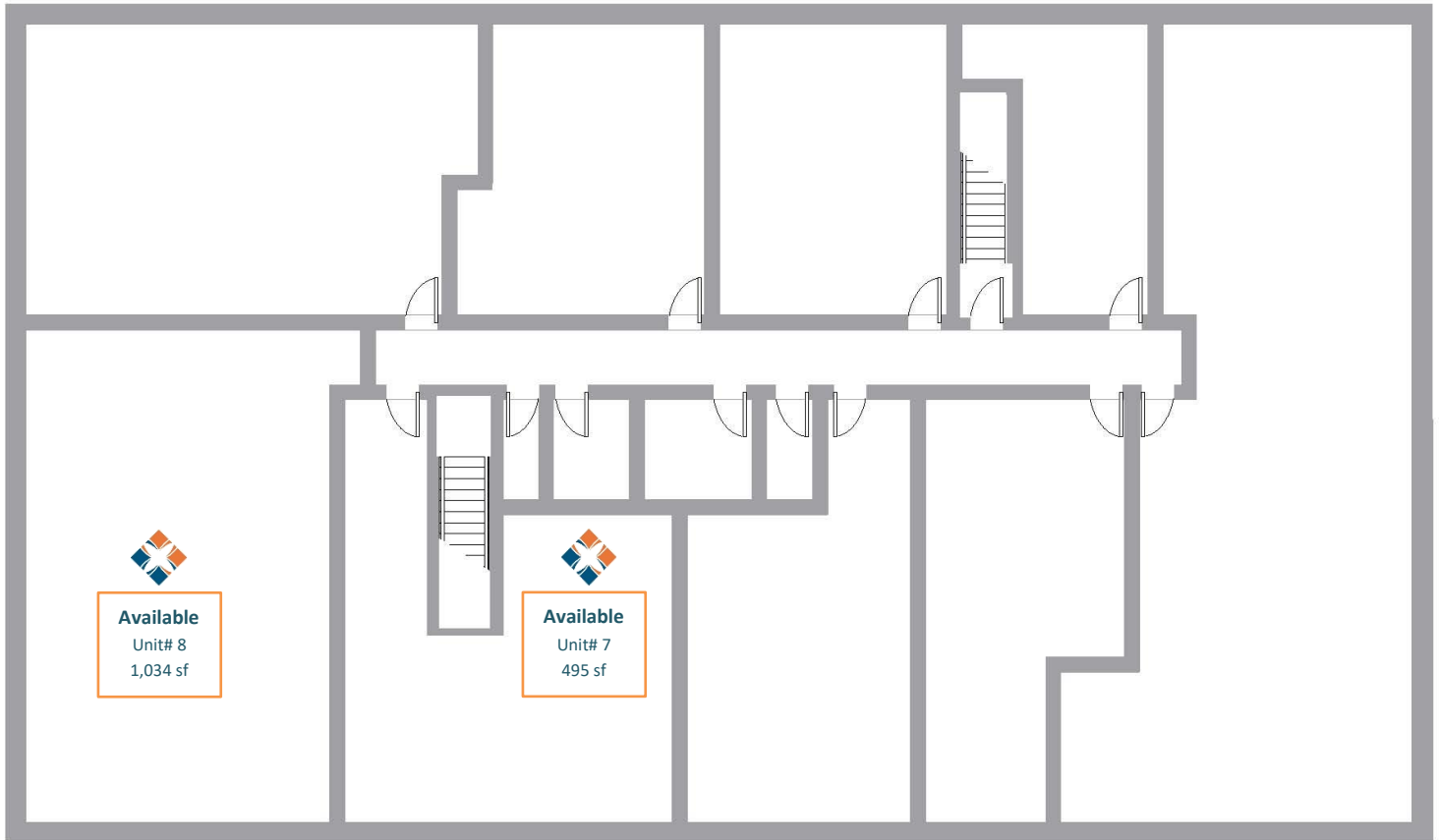
ELK
PROPERTY MANAGEMENT LIMITED



For Sublease » Office Space
2580 Innes Road
Ottawa, Ontario

» Floor Plan

495 + 1,034 sf



ADDITIONAL HIGHLIGHTS

- + Situated in the Blackburn Hamlet Community
- + Adjacent to a large residential neighbourhood

» Pictures



For More Information Contact

451 Daly Ave., 2nd Floor
Ottawa, Ontario K1N 6H6
www.elkproperty.com

Karen Braye Tel: 613-244-1012 ext: 200
Cell: 613-229-8723
kbraye@elkproperty.com



ELK
PROPERTY MANAGEMENT LIMITED