



For Lease » Retail Space

18 Beechwood Ave

Ottawa | Ontario



Building Details

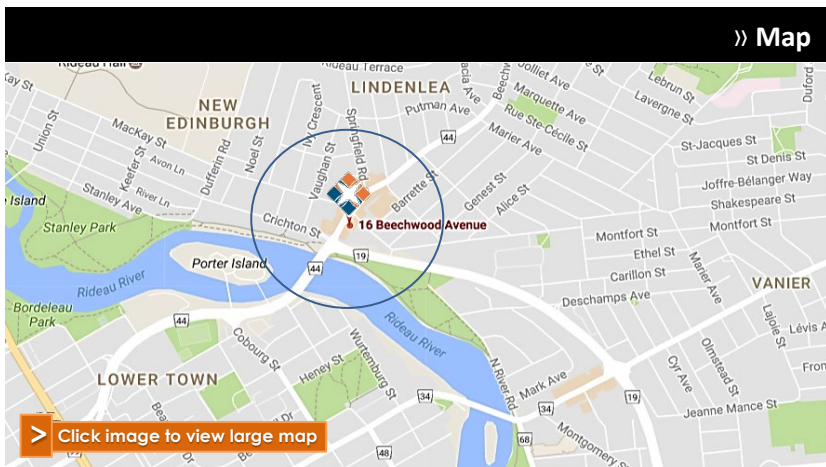
Building Size:	22,971 sf
Number of Floors:	3
Net Rent:	\$30.00
Operating Costs:	\$19.58

Space for Lease

Sq. ft.	Availability
990	Immediately

BUILDING KEY FEATURES + HIGHLIGHTS

- + Beautiful 3-storey brick building with copper roofing.
- + Multi use retail, office and residential apartment building.
- + Magnificent landscaping with patios and seating area.
- + Large showcase windows
- + Indoor parking and storage available
- + At the corner of Beechwood Ave and Charlevoix Ave
- + Minutes to downtown
- + Access to HWY 417 via Vanier Parkway
- + Within a block to Rideau River/bike/walking paths
- + Situated in trendy New Edinburgh village
- + Adjacent to many other shops and restaurants



For More Information Contact

451 Daly Ave., 2nd Floor
Ottawa, Ontario
K1N 6H6

David Gaty



Tel: 613-244-1012 ext: 224



dgary@elkproperty.com



www.elkproperty.com

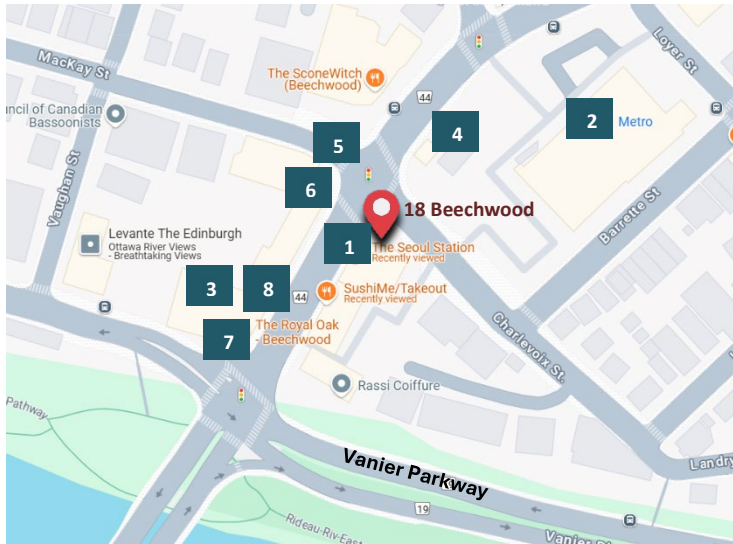


ELK
PROPERTY MANAGEMENT LIMITED



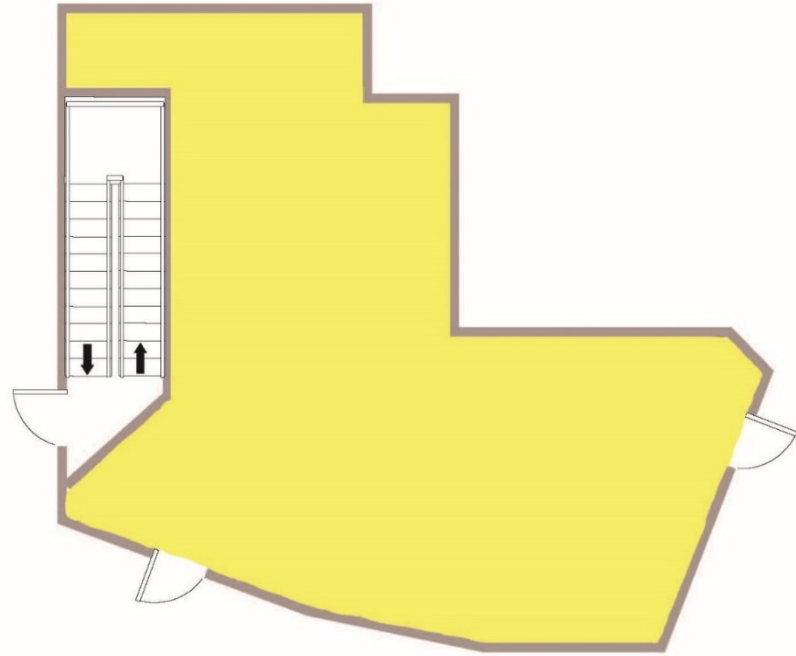
For Lease » Retail Space
18 Beechwood Ave
 Ottawa | Ontario

» Nearby Amenities



- | | |
|-----------------------|---------------------|
| 1 Dhrueves Restaurant | 5 Starbucks |
| 2 Metro Grocery Store | 6 BMO |
| 3 Anytime Fitness | 7 The Royal Oak |
| 4 Shell Gas Station | 8 Guardian Pharmacy |

» Floor plan



» Additional Highlights

- Exceptional corner unit with an inviting patio
- Completely wheelchair accessible for all customers
- Prime retail space that offers excellent visibility
- Features impressive panoramic windows that enhance the space

» Pictures



For More Information Contact

451 Daly Ave., 2nd Floor
 Ottawa, Ontario
 K1N 6H6

David Gaty



613-244-1012 ext: 224



dgaty@elkproperty.com



www.elkproperty.com



ELK
 PROPERTY MANAGEMENT LIMITED